

JUNIOR LEVEL

Vocabulary bank

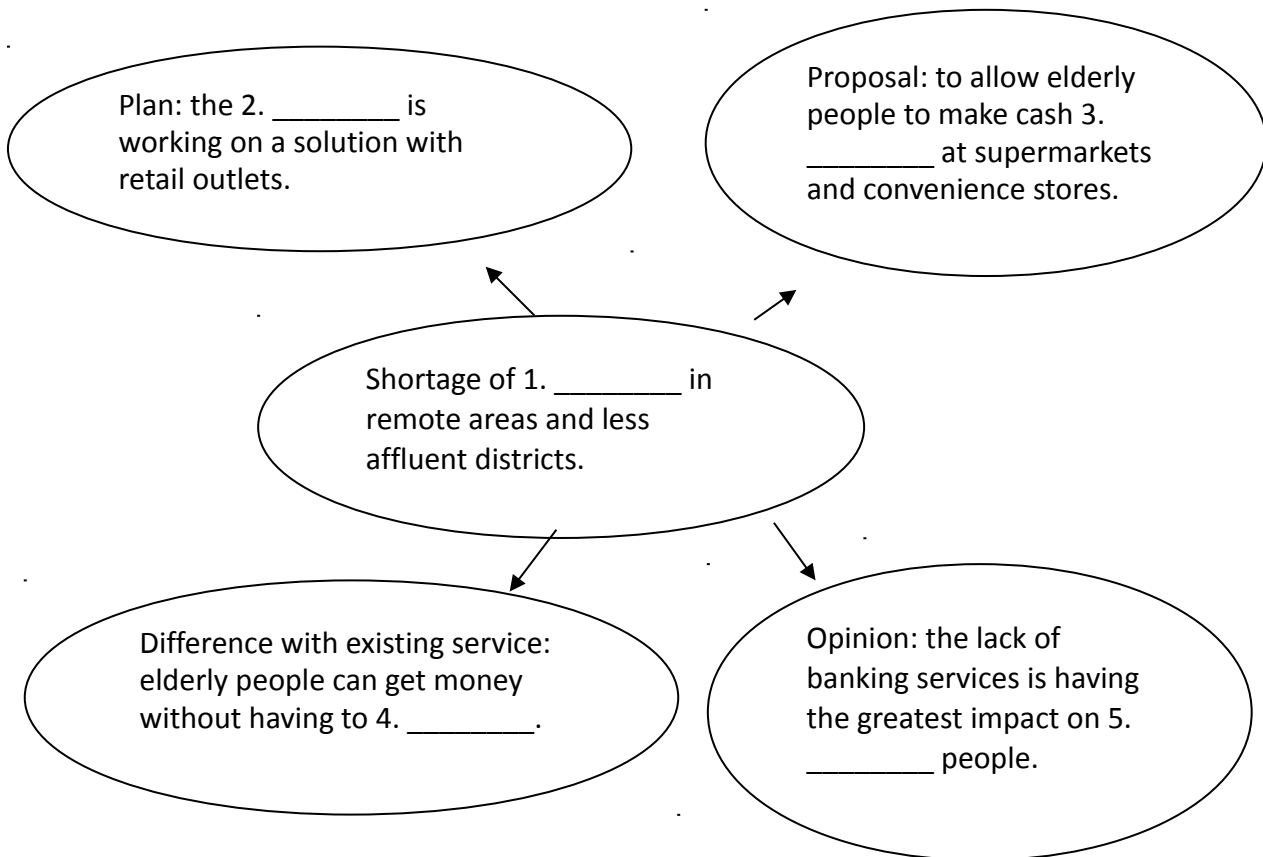
Replace the highlighted words with words from the news article.

Banks do not operate many branches in **1. far away** locations. A report by the Hong Kong Monetary Authority to the **2. law-making body** also noted a lack of bank **3. branches** at many public housing estates. Such inadequate service is having the greatest **4. effect** on the elderlies. So the HKMA is asking convenience stores and supermarkets to help elderly people **5. take out** money from their accounts without requiring them to make a purchase.

1. ____ 2. ____ 3. ____ 4. ____ 5. ____

B. Fill in the mind map

Please complete the mind map below:



B. CRITICAL THINKING

1. Why are banks not keen to open new branches in remote areas and some public housing estates?
2. Why is this having the greatest impact on elderly residents in those areas?
3. Are banking services a basic necessity? Why or why not?
4. Do you think the Hong Kong Monetary Authority's plan will work?
5. Do you support using public money to fund the cost of the plan?



News in Liberal Studies worksheet
04 January, 2017

[Answers]

Junior level

1.remote; 2.Legislative Council; 3.outlets; 4.impact; 5.withdraw

Advanced level

A. Fill in the mind map

1. banking services; 2.Hong Kong Monetary Authority; 3.withdrawals; 4.make a purchase;
5.disadvantaged